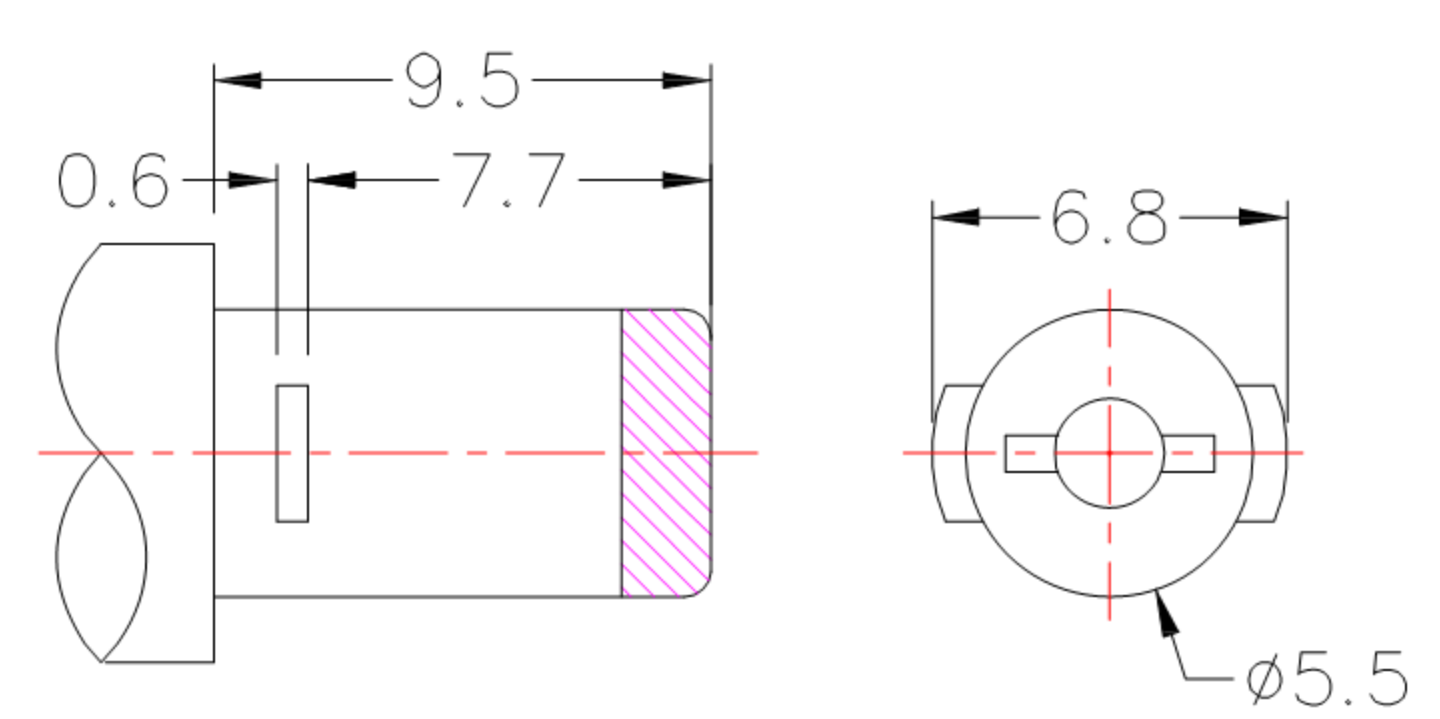
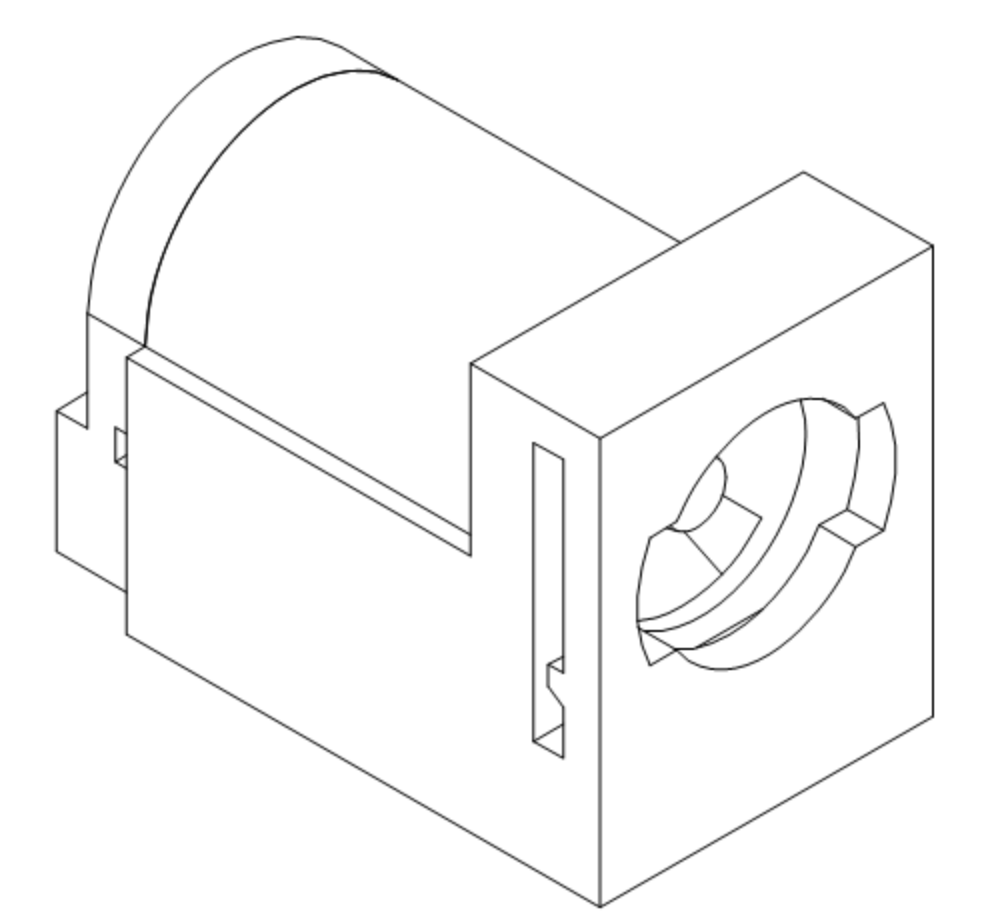


PCB LAYOUT (BOTTOM VIEW)



DC SPECIAL MATE PLUG



MODEL NO.	DC-062H-x
SCHEMATIC	
CENTER PIN	ϕ 2.0 mm ϕ 2.5 mm

※MATERIAL

- CENTER PIN :COPPER
- TERMINAL 1 :BRASS
- TERMINAL 2 :PHOSPHOR BRONZE
- TERMINAL 3 :BRASS
- HOUSING :PBT
- COVER :PBT

SPECIFICATION

- 1.Rating : DC 16V 5.0A ;
- 2.Contact resistance : \leq 50m Ω ;
- 3.Insulation resistance : \geq 100M Ω (DC500V) ;
- 4.Withstand voltage : 500VAC ;
- 5.Insertion and extraction force : 3-20N
- 6.life test : 5,000 cycles °



TOLERANCE UNLESS OTHERWISE STATED :	Up to 5 \pm 0.2	3RD. ANGEL'S	UNITS	MM
	Above 5 ~ 15 \pm 0.3			
	Above 15 ~ 30 \pm 0.4			
	Above 30 ~ 50 \pm 0.5			
	Angle \pm 0.3°			

DRAWN BY:	DATE	MAT'L	TITLE	JACK
Jack Lu	08/06/13		MODLE	DC JACK
CHECKED BY:	DATE	FINISH	DWG NO.	DC-062H-x
Jacky Chen	08/06/13		PART NO.	DC-062H-x
APPROVED BY:	DATE	SCALE	1 : 1	
Tony Kao	08/06/13	SHEET NO.	1 of 1	
				SIZE A4
				VER R